

# 대한민국 한의학의 현재와 미래

## 강동경희대학교한방병원

The Present and Future of Korean Medicine  
Kyung Hee University Korean Medicine Hospital at Gangdong

### CONTENTS

04	\	프롤로그
06	\	세계적으로 인정받는 연구 성과
08	\	한방암센터
09	\	한방소화기/보양클리닉
10	\	한방호흡기/비뇨기클리닉
11	\	안면마비센터
12	\	한방여성건강클리닉
13	\	소아청소년클리닉
14	\	한방신경정신과
15	\	한방안이비인후피부과
16	\	웰니스센터
17	\	사상체질과
18	\	한방건강증진클리닉
19	\	진단·생기능의학실
20	\	한방음악치료센터
21	\	중풍뇌질환센터
22	\	관절·류마티스센터
23	\	척추센터
24	\	동서건강증진센터
25	\	국제교류센터
26	\	진료협력센터
27	\	에필로그

## 최첨단 선진의료의 중심, 강동경희대학교병원

A center of advanced high tech medical services,  
Kyung Hee University Hospital at Gangdong

## 변화와 도약을 위한 창조적 도전

### Creative challenge to change and take off

Prologue

Research achievements

Cancer Center

Clinic for Digestive Health and Bodily Vigor

Clinic for the Respiratory and Urinary System

Facial Paralysis Center

Women's Health Clinic

Child and Adolescent Clinic

Korean Neuropsychiatry Medicine

Ophthalmology, Otolaryngology and Dermatology

Wellness Center(Obesity/ Rehabilitation/ Health Mind Clinic)

Constitution Improvement Clinic

Korean Medicine Health Promotion Clinic

Biofunctional Diagnosis Medicine

Music Therapy Center

Stroke & Neurological Disorders Center

Arthritis and Rheumatism Center

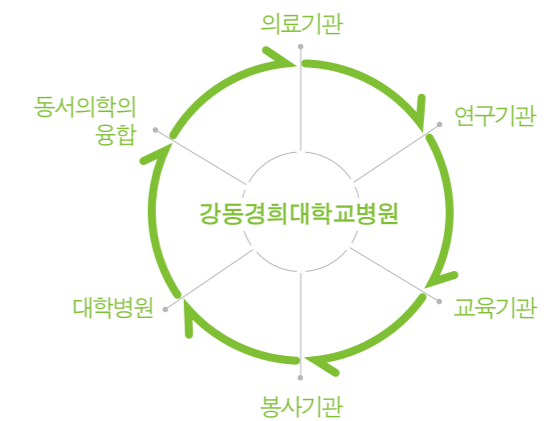
Spine Center

East-West Health Promotion Center

KUIMS

Referral Center

Epilogue



## VISION 2015

Trusted medical institution leading initiative  
future of modern medicine

World class research institution creating new  
medicine with joint researches

Educational institution training considerate medical  
professionals to have respect and excellence

Service provider practicing humanism by  
supporting outcasts

Creative university hospital enhancing  
achievement and pride of staffs

현대의학의 진취적 미래를 선도하는 신뢰받는 의료기관

융합 연구로 신의학을 창조하는 세계적인 연구기관

배려와 존중, 탁월함을 갖춘 의료인을 양성하는 교육기관

소외된 세계시민을 섬기며 인류애를 실천하는 봉사기관

구성원의 성취와 긍지를 고양하는 창조적인 대학병원

## 한의학 발전을 선도하는 세계 최고의 한방병원

**The world's best hospital of Korean  
medicine leading the development of  
Korean medicine**

동서의학의 융합을 통한 신의학 창출  
한의학의 표준을 제시하는 교육과 연구 중심 병원  
전문화를 통한 고난이도 질환에 대안을 제시하는 병원

Creating a new medicine through the fusion of  
Korean and western medicine.

A hospital with a mission to incorporate edu-  
cation and research setting the standard for  
Korean medicine.

A hospital providing specialized alternatives  
for diseases which are difficult to treat.

## 동양의학과 서양의학의 장점을 융합한 새로운 진료 패러다임

**A new treatment paradigm fusing  
western medicine with Korean medicine**

강동경희대학교한방병원은 한·양방 전문 진료센터 및 질병 중심의 조화된 한방  
고유의 특화 진료를 제공하여, 국내외적으로 차별화된 진료 시스템을 갖추고  
있습니다. 또한 한·양방 협진으로 환자 개인별 맞춤 진료 서비스를 제공합니다.

Kyung Hee University Korean Medicine Hospital at Gangdong has an out-  
standing health care system both domestically and internationally while  
offering medical centers specializing in both Korean and western medicine,  
as well as unique specialized treatments using balanced Korean medicine  
techniques to focus on diseases. We also offer personalized health care ser-  
vices through the integration of conventional western medicine doctors  
with Korean medicine practitioners that meet each patient's special needs.



# 세계적으로 인정받는 연구 성과, 한의학의 미래를 엽니다

Internationally recognized research achievements, We will open the future of Korean medicine.

한방암센터 이수경 교수  
*Korean Medicine Cancer Center*  
*Dr. Lee, Soo-Kyung \_ SCI*  
Rhus verniciflua Stokes extract as a potential option for treatment of metastatic renal cell carcinoma : report of two cases.

한방안아비인후피부과 최인화 교수  
*Korean Medicine Ophthalmology, Otolaryngology and Dermatology*  
*Dr. Choi, In-Hwa \_ SCI*  
Berberine inhibits the production of thymic stromal lymphopoietin by the blockade of caspase-1/NF-κB pathway in mast cells.

한방내과 박정미 교수, 박성욱 교수  
*Korean Internal Medicine*  
*Dr. Park, Jung-Mi, Dr. Park, Seong-Uk \_ SCIE*  
Brain activity associated with memory and cognitive function during jaw-tapping movement in healthy subjects using functional ma.

한방내과 박재우 교수  
*Korean Internal Medicine*  
*Dr. Park, Jae-Woo \_ SCIE*  
Protective effects of Galla Rhois, the ex-crescence produced by the sumac aphid, Schlechtendalia chinensis, on transient focal cerebral ischemia in the rat.

한방신경정신과 김종우교수, 정선용 교수  
*Korean Neuropsychiatry Medicine*  
*Dr. Kim, Jong-Woo, Dr. Chung, Sun-Yong \_ SCIE*  
Effect of Korean medicine music therapy on patients with Hwa-byung: a study protocol for a randomized controlled trial.

한방재활의학과 송미연 교수  
*Korean Rehabilitation Medicine*  
*Dr. Song, Mi-Yeon \_ SSCI*  
Efficacy of a 0.1% Capsaicin Hydrogel Patch for Myofascial Neck Pain: A Double-Blinded Randomized Trial.

한방부인과 이진무 교수  
*Korean Women's Health Medicine*  
*Dr. Lee, Jin-Moo \_ SCI*  
Dangguijakyak-san protects dopamine

neurons against 1-methyl-4-phenyl-1,2,3,6-tetrahydropyridine-induced neurotoxicity under postmenopausal conditions.

침구과 박동석 교수, 백용현 교수  
*Acupuncture*  
*Dr. Park, Dong-Suk, Dr. Baek, Yong-Hyeon \_ SCI*  
WIN-34B, a new herbal medicine, inhibits the inflammatory response by inactivating I kappa B-alpha phosphorylation and mitogen activated protein kinase pathways in fibroblast-like synoviocytes.

한방내과 배형섭 교수, 고창남 교수, 박정미 교수, 박성욱 교수  
*Korean Internal Medicine*  
*Dr. Bae, Hyung-Sup, Dr. Ko, Chang-Nam, Dr. Park, Jung-Mi Dr. Park, Seong-Uk \_ SCI*  
Acupuncture for Cerebral Vasospasm After Subarachnoid Hemorrhage: A Retrospective Case-Control Study.

한방내과 고창남 교수, 박정미 교수, 박성욱 교수  
*Korean Internal Medicine*  
*Dr. Ko, Chang-Nam, Dr. Park, Jung-Mi Dr. Park, Seong-Uk \_ SCI*  
Can acupuncture affect the circadian rhythm of blood pressure? A randomized, double-blind, controlled trial.

한방내과 고창남 교수, 박정미 교수, 박성욱 교수  
*Korean Internal Medicine*  
*Dr. Ko, Chang-Nam, Dr. Park, Jung-Mi Dr. Park, Seong-Uk \_ SCI*  
Uhwang Chungsim won decreases blood oxygen level-dependent fMRI signal response to a motor stimulation task.

침구과 박영재 교수  
*Acupuncture*  
*Dr. Park, Young-Jae \_ SCI*  
Relationships of pulse waveform parameters to mood states and chronic fatigue.

침구과 박동석 교수  
한방안아비인후피부과 최인화 교수  
*Acupuncture*

*Dr. Park, Dong-Suk*  
*Korean Medicine Ophthalmology, Otolaryngology and Dermatology*  
*Dr. Cho, In-Hwa \_ SCI*  
The Effect of TJ-15 Plus TJ-17 on Atopic Dermatitis: A Pilot Study Based on the Principle of Pattern Identification.

한방내과 고창남 교수, 박정미 교수, 박성욱 교수  
*Korean Internal Medicine*  
*Dr. Ko, Chang-Nam, Dr. Park, Jung-Mi Dr. Park, Seong-Uk \_ SCI*  
Effectiveness of acupuncture and bee venom acupuncture in idiopathic Parkinson disease.

한방내과 박재우 교수  
*Korean Internal Medicine*  
*Dr. Park, Jae-Woo \_ SCI*  
Development of differential criteria on tongue coating thickness in tongue diagnosis.

침구과 박영재 교수  
*Acupuncture*  
*Dr. Park, Young-Jae \_ SCI*  
Clinical utility of paced breathing as a concentration meditation practice.

한방내과 박정미 교수  
*Korean Internal Medicine*  
*Dr. Park, Jung-Mi \_ SCI*  
Effects of Hyul-Bu-Chuke-Tang on Erythrocyte Deformability and Cerebrovascular CO2 Reactivity in Normal Subjects.

한방내과 박정미 교수, 박성욱 교수  
*Korean Internal Medicine*  
*Dr. Park, Jung-Mi, Dr. Park, Seong-Uk \_ SCI*  
Relationship between Blood Stasis Syndrome Score and Cardioankle Vascular Index in Stroke Patients.

한방소아과 장규태 교수  
*Pediatrics of Korean Medicine*  
*Dr. Chang, Gyu-Tae \_ SCI*  
Resveratrol Inhibits Mucin Gene Expression, Production and Secretion From Airway Epi-

thelial Cells.  
  
한방내과 박재우 교수  
*Korean Internal Medicine*  
*Dr. Park, Jae-Woo \_ SCI*  
Defatted sesame seed extract reduces brain oedema by regulating aquaporin 4 expression in acute phase of transient focal cerebral ischaemia in rat.

한방소아과 장규태 교수  
한방신경정신과 정선용 교수  
*Pediatrics of Korean Medicine*  
*Dr. Chang, Gyu-Tae*  
*Korean Neuropsychiatry Medicine*  
*Dr. Chung, Sun-Yong \_ SCIE*  
Amomum villosum induces longitudinal bone growth in adolescent female rats.

한방신경정신과 김종우교수  
*Korean Neuropsychiatry Medicine*  
*Dr. Kim, Jong-Woo \_ SCIE*  
Individual differences in smoking-related cue reactivity in smokers: An eye-tracking and fMRI study.

한방내과 박재우 교수  
한방부인과 이진무 교수  
*Korean Internal Medicine*  
*Dr. Park, Jae-Woo*  
*Korean Women's Health Medicine*  
*Dr. Lee, Jin-Moo \_ SCI*  
Effect of Korean medicine music therapy on idiopathic chronic fatigue: A case study.

한방안아비인후피부과 최인화 교수  
*Korean Medicine Ophthalmology, Otolaryngology and Dermatology*  
*Dr. Choi, In-Hwa \_ SCI*  
Epigallocatechin-3-O-gallate inhibits the production of thymic stromal lymphopoietin by the blockade of caspase-1/NF-κB pathway in mast cells.

한방재활의학과 송미연 교수  
*Korean Rehabilitation Medicine*  
*Dr. Song, Mi-Yeon \_ SCI*  
Acupuncture for Chronic Low Back Pain: A Multicenter, Randomized, Patient-Assessor

Blind, Sham-Controlled Clinical Trial.  
  
한방내과 박정미 교수  
*Korean Internal Medicine*  
*Dr. Park, Jung-Mi \_ SCI*  
Sex differences in amygdala subregions: Evidence from subregional shape analysis.

한방안아비인후피부과 최인화 교수  
*Korean Medicine Ophthalmology, Otolaryngology and Dermatology*  
*Dr. Choi, In-Hwa \_ SCI*  
Naringenin suppresses the production of thymic stromal lymphopoietin through the blockade of RIP2 and caspase-1 signal cascade in mast cells.

한방내과 박재우 교수  
*Korean Internal Medicine*  
*Dr. Park, Jae-Woo \_ SCI*  
Chlorogenic acid ameliorates brain damage and edema by inhibiting matrix metalloproteinase-2 and 9 in a rat model of focal cerebral ischemia.

한방내과 윤성우 교수  
*Korean Internal Medicine*  
*Dr. Yoon, Seong-Woo \_ SCIE*  
Bojungikki-tang for cancer-related fatigue: a pilot randomized clinical trial.

한방내과 윤성우 교수  
*Korean Internal Medicine*  
*Dr. Yoon, Seong-Woo \_ SCIE*  
Antiviral effect of Curcuma longa Linn extract against hepatitis B virus replication.

한방음악치료센터 이승현 교수  
*Korean Medicine Music Therapy Center*  
*Dr. Lee, Seung-Hyun \_ SCIE*  
Effect of Korean medicine music therapy on idiopathic chronic fatigue: A case study.

한방음악치료센터 이승현 교수  
*Korean Medicine Music Therapy Center*  
*Dr. Lee, Seung-Hyun \_ SCIE*  
Effect of Korean medicine music therapy on patients with Hwa-byung: a study protocol for a randomized controlled trial.

한방암센터는 독성과 부작용이 없는 넥시아(법제칠수 추출 한약제)를 기본으로 한 한의학적 치료로 진행암을 치료합니다. 한약 단일 치료로 4기 전이암이 완전 소실되어 5년 이상 관해를 유지하는 증례를 세계 최초로 학계에 보고했습니다. 또한 기존 항암 치료에 실패한 진행암 환자의 생존 기간을 연장하는 성과들을 이루고 부작용 없는 치료로 환자 삶의 질을 높이는 임상 성과를 이루었습니다. 환자의 치료 만족도가 높은 강동경희대학교한방병원 한방암센터는 환자와 보호자 모두가 행복한 암센터입니다.

**Korean Medicine Cancer Center specializing in treatment for advanced cancer**

In our Korean Medicine Cancer Center, advanced cancers are treated by Korean medicine using a herbal medicine, nexia (Rhus verniciflua Stokes Extract) which has known to have no toxic effects or adverse events. For the first time in the academic field, our center reported the cases of patient with stage 4 metastatic cancer who, after undergoing a monotherapy with Korean medicine, has remained in remission for more than five years, with the cancer having been completely eliminated. In addition, we have succeeded in extending the lifespan of patients with advanced cancer, for whom chemotherapy had previously failed, and we have obtained clinical results showing that these treatments without side effects improve the patient's quality of life. The Korean Medicine Cancer Center of Kyung Hee university Korean Medicine hospital at Gangdong shows high level of patients' satisfaction rate for treatment and will always make patients and their families happy.



**진행암을  
전문적으로 치료하는  
한방암센터**

**Korean Medicine Cancer  
Center specializing in  
treatment for advanced  
cancer**

The Korean  
Medicine Cancer  
Center has high  
patient satisfaction  
and will always  
make patients  
and their families  
happy.

**전문 진료 분야**

- 암 수술 전후 관리
- 초기암 수술 이후의 재발 방지
- 수술이 불가능한 진행암 환자 치료
- 고령의 환자 치료
- 진행암 전이암 환자 치료

**Specialties**

- Specialty care before or after cancer surgery
- Prevention of cancer recurrence after initial surgery
- Treatment of patients who have advanced cancer and cannot undergo surgery
- Treatment of elderly patients with advanced cancer and metastatic cancer

Our center uses comprehensive  
Korean medicinal diagnosis  
and treatments for digestive  
disorders.

**한방 진료의 ABC  
한방소화기/  
보양클리닉(한방내과)**

**Korean Medicine Clinic  
for Digestive Health and  
Bodily Vigor(Korean Internal  
Medicine)**



**전문 진료 분야**

- 기능성 소화불량증, 역류성 식도염, 급만성 위염(복통, 소화불량, 속쓰림)
- 과민성 장 증후군 및 급만성 장염(변비, 설사, 가스참)
- 염증성 장 질환(크론병, 궤양성 대장염 등) 및 면역질환(베체트병, 쇼그렌증후군)

**Specialties**

- Functional dyspepsia, reflux esophagitis, acute and chronic gastritis (abdominal pain, indigestion and heartburn)
- Irritable bowel syndrome and acute or chronic enteritis (constipation, diarrhea and gas)
- Inflammatory bowel disease (Crohn's disease, ulcerative colitis, etc.) and autoimmune diseases (Behcet's disease and Sjogren's syndrome)

한방소화기클리닉은 소화기 질환에 대한 포괄적인 한방적 진단법과 치료법을 적용합니다. 특히 식욕부진 및 만성 소화불량, 복통, 설사, 변비 등의 각종 장 질환, 난치성 면역 질환에 대한 다양한 한의학적 치료법을 개발하는 데 중점을 두고 있습니다.

한방보양클리닉의 '보양(補養)'은 전반적인 건강 회복 및 면역력 상승을 의미합니다. 만성피로를 주요 질환으로 하며 입원 환자(장기입원, 수술 등)의 삶의 질을 높이고 회복력을 강화시키는 데 주안점을 둡니다.

**ABCs of Korean medicine, Korean Medicine Clinic for Digestive Health and Bodily Vigor (Korean Internal Medicine)**

The Korean medicine clinic for digestive health uses comprehensive Korean medicinal diagnosis and treatments for digestive disorders. In particular, we focus on developing various Korean medicine treatments for intractable immune diseases and different types of intestinal diseases, such as loss of appetite, chronic dyspepsia, abdominal pain, diarrhea, and constipation. The term "bodily vigor", used by the Korean medicine clinic for bodily vigor, means the overall improvement of health and the immune system. Chronic fatigue is one of the major diseases treated in the center, thus we put great emphasis on improving the quality of the life of inpatients (long-stay patients, surgery patients, etc.) and strengthening the recuperative powers.



In our Korean Medicine Clinic for the Respiratory System and Urinary System, the fundamental therapy which cures diseases by improving the immune system is used.

몸은 편안하고  
마음은 상쾌하게  
한방호흡기/  
비뇨기클리닉(한방내과)

Korean Medicine Clinic for  
the Respiratory System and  
Urinary System

한방호흡기/비뇨기클리닉에서는 면역 기능을 향상시켜 질병을 치료하는 근본 치료법을 사용합니다. 호흡기와 비뇨기의 각종 질환은 급만성 염증에 해당하는 경우가 많습니다. 만성 염증은 소염제나 항생제로는 근본적 치료가 되지 않으며 반드시 인체의 면역 기능을 상승시켜 자연치유력을 높여야 호전됩니다. 한의학 치료는 인체의 정기를 도와 쇠퇴된 기능을 되살리며 각종 염증을 가라앉혀 질환을 근본적으로 치료합니다.

Relax your body and refresh your mind. Korean Medicine Clinic for the Respiratory System and Urinary System (Korean Internal Medicine)

In our Korean Medicine Clinic for the Respiratory System and Urinary System, the fundamental therapy which cures diseases by improving the immune system is used. In many cases, different types of respiratory and urinary system diseases have been linked to acute and chronic inflammation. Chronic inflammation cannot be fundamentally cured with anti-inflammatory drugs or antibiotics. Real improvement can only be made when the body's natural healing power is increased by boosting immune function. Korean medicine therapies applied to cure various types of inflammations work to restore decreased body function by increasing the energy (Qi) of the human body.

#### 전문 진료 분야

- 호흡기 질환: 감기, 해수기침, 천식, 만성폐쇄성 폐 질환, 기관지염, 인후염, 폐렴
- 비뇨기 질환: 소변 이상(잔뇨감, 빈뇨, 급박뇨, 배뇨통), 과민성 방광증, 방광염, 전립선비대, 남성갱년기

#### Specialties

- Respiratory disease: cough, chronic cough, asthma, chronic obstructive pulmonary disease (COPD), bronchitis, sore throat, pneumonia
- Urinary tract infectious disease: micturition (urination) abnormality (post-void residual urine, urinary frequency, urinary urgency, dysuria), overactive bladder, cystitis, benign prostatic hyperplasia, andropause

구안와사, 벨 마비라고 불리는 말초성 안면마비를 비롯하여 다양한 안면 질환을 집중적으로 치료하는 센터입니다. 안면마비센터는 침구과와 양방 이비인후과의 협진 시스템, 오랜 기간 축적된 경험을 바탕으로 한 숙련된 치료 기술로 보다 빨리, 보다 안전하게 안면마비 질환에서 벗어나게 도와드립니다.

#### Specializing in the treatment for diseases of the facial region, Facial Paralysis Center

The Facial Paralysis Center is dedicated to working intensively on treatment for patients with a variety types of peripheral facial paralysis including Bell's palsy. With our skilled treatment techniques based on the accumulation of long years of experience acquired with the combined system of east and west medicine, our center helps patients with facial paralysis to recover faster and more safely.



안면 질환  
특성화 전문 진료  
안면마비센터

Specializing in the treatment  
for diseases of the facial  
region, Facial Paralysis Center

#### 전문 진료 분야

- 급성기 안면마비 한·양방 입원 집중 치료 프로그램
- 만성기 후유증 집중 치료 프로그램
- 외상 / 수술 후 안면마비클리닉
- 안면통증클리닉(삼차신경통, 안면감각이상, 안면부종)

#### Specialties

- Intensive treatment program in Korean and western medicine for inpatients with acute facial paralysis
- Intensive treatment program for patients suffering from long term aftereffects
- Facial Paralysis clinic for patients with facial paralysis after trauma / surgery
- Facial Pain Clinic (trigeminal neuralgia, facial paresthesia, facial edema)

Facial Paralysis  
Center our  
center helps  
patients with  
facial paralysis  
to recover  
faster and more  
safely.

# Korean Medicine Women's Health Clinic offers a wide range of healthcare services

건강한 여성의  
삶을 위해  
한방여성건강클리닉  
(한방부인과)

For women's health. Korean  
Medicine Women's Health  
Clinic



전문 진료 분야

- 월경 관련 질환(월경통, 월경불순, 월경전증후군, 갱년기장애)
- 생식기 관련 질환(자궁근증, 자궁내막증, 난소낭종, 냉대하, 골반통, 수술 후 회복 관리)
- 임신&산후 관련 질환(불임, 유산, 산전&산후 회복 관리, 입덧, 임신출혈 및 복통, 산후풍)

Specialties

- Menstrual-related disorders (dysmenorrhea, menstrual irregularities, premenstrual syndrome, and menopausal disorders)
- Genital-related diseases (uterine fibroids, endometriosis, ovarian cysts, leukorrhea, pelvic pain, and postoperative recovery management)
- Pregnancy & Postpartum disorders (infertility, miscarriage, prenatal & postpartum recovery, morning sickness, vaginal bleeding during pregnancy, abdominal pain, and postpartum diseases)

한방여성건강클리닉은 사춘기 소녀부터 갱년기 및 폐경 이후 여성에 이르기까지 여성 특유의 생리적 현상과 관련된 월경 질환, 생식기 질환, 임신 질환, 산후 질환과 여성에 특히 많은 수족냉증, 요실금 등을 전문적으로 진료합니다. 산부인과 협진과 한방 생기능 검사를 통해 기질적 문제와 기능적 상태의 정확한 진단과 이에 적절한 치료 방법을 제시합니다.

**For women's health. Korean Medicine Women's Health Clinic (Korean Medicine Gynecology)**  
Korean Medicine Women's Health Clinic offers a wide range of healthcare services, treating menstrual disorders, genital diseases, pregnancy-related diseases, postpartum diseases, the cold hands and feet, from which many women suffer, and urinary incontinence for patients of all ages from adolescent girls to menopausal and postmenopausal women. We offer accurate diagnosis of temperament disorders and body function, and offer appropriate treatment methods through the integration of obstetrics and gynecology with Korean medicine laboratory testing of body function.

소아청소년클리닉은 태아기부터 청소년기(0세~만18세)까지의 성장과 발달을 도와 신체적, 정신적, 사회적으로 건강하게 자라도록 이끌어 드립니다. 전문한의사의 정확한 진찰을 통하여 소아의 체질과 현재 상태를 정확하게 파악한 후 그에 알맞은 맞춤 치료를 시행합니다.

**Treatment fitting the development of the child growth process, Child and Adolescent Clinic (Pediatrics of Korean Medicine)**  
The Child and Adolescent Clinic helps children ranging from infants to adolescents (0 to 18 years old) with development and growth so that they grow healthy both physically, mentally and socially. Appropriate treatments that meet each child's physical condition are performed by our Korean medicine practitioners after correctly determining the child's current state.

전문 진료 분야

- 허약아: 성장부진, 식욕부진, 만성복통, 체력보강, 학습장애, 성조숙
- 알레르기 및 호흡기 증상: 만성기침, 비염, 천식, 두드러기, 중이염, 부비동염(축농증)
- 야뇨, 경기, 경련, 발달장애

Specialties

- Weak children: growth retardation, loss of appetite, chronic abdominal pain, low physical strength, learning disabilities, and precocious puberty
- Allergy and respiratory symptoms: chronic cough, rhinitis, asthma, urticaria, otitis media, and sinusitis
- Nocturia, convulsions, spasms, and developmental disabilities

Appropriate treatments that meet each child's physical condition are performed by our Korean medicine practitioners after correctly determining the child's current state.



성장발달 과정에  
따른 맞춤 진료  
소아청소년클리닉  
(한방소아과)

Child and Adolescent  
Clinic(Pediatrics of Korean  
Medicine)



## 뇌와 마음의 건강 한방신경정신과 (화병/스트레스클리닉)

Korean Neuropsychiatry  
Medicine (Anger Disorders /  
Stress Clinic)

스트레스가 많은 사회에서 뇌는 과도하게 사용되고 마음은 상처를 받게 됩니다. 한방신경정신과는 정신과 신체의 균형과 조화를 통해 뇌와 마음의 건강을 도모합니다. 한약, 침뿐만 아니라 명상과 기공 그리고 스트레스 관리 프로그램을 통해 뇌와 마음이 자생력을 갖도록 합니다.

### Healthy brain and mind, Korean Neuropsychiatry Medicine (Anger Disorders / Stress Clinic)

The brain can become overwhelmed and feelings can get hurt in a society where people are placed under lots of stress. Korean Neuropsychiatry Medicine puts great emphasis on maintaining the health of the brain and mind through the balance and harmony of the mind and body. The brain and the mind gain independent strength through the use of herbal medicine and acupuncture, as well as meditation, Qigong, and stress management.

Korean Neuropsychiatry Medicine puts great emphasis on maintaining the health of the brain and mind through the balance and harmony of the mind and body.

### 전문 진료 분야

- 화병, 우울, 공황장애 등의 심리 및 정신적 문제
- 정신분열병, 강박장애, 알코올중독 등의 정신장애
- 치매, 건망, 두통, 불면 등의 신경계 질환

### Specialties

- Psychological and emotional problems, such as Hwa-byung (anger disorder), depression, and panic disorder
- Mental disorders, such as schizophrenia, obsessive-compulsive disorder, and alcoholism
- Nervous system disorders, such as dementia, forgetfulness, headaches, and insomnia

한방안이비인후피부과는 눈과 귀, 코, 목, 피부에 발생하는 모든 질환에 대해 전신의 기능 이상을 살펴 치료합니다. 잘 낫지 않는 아토피 피부염, 알레르기 비염과 같은 알레르기 질환, 이명과 난청, 어지럼증, 반복되는 이비인후과 질환과 관련된 문제들을 환자의 면역 조절 능력과 저항력, 자연 회복력을 도와 근본적으로 치료합니다.

### Satisfying the five senses, Korean Medicine Ophthalmology, Otolaryngology and Dermatology

Korean Medicine Ophthalmology, Otolaryngology and Dermatology offers healthcare services addressing whole body dysfunction related to all of the diseases that occur in the eyes, ears, nose, throat, and skin. We focus on allergic diseases, such as atopic dermatitis and allergic rhinitis, which are often not easily cured, and repetitive Otolaryngology diseases, such as tinnitus, hearing loss and dizziness. We treat patients by improving patients' immune-modulating abilities, disease resistance, and natural resilience.



## 오감만족 한방안이비인후 피부과

Korean Medicine  
Ophthalmology,  
Otolaryngology and  
Dermatology

### 전문 진료 분야

- 알레르기/피부미용클리닉: 아토피 피부염, 지루피부염, 탈모, 알레르기 접촉피부염
- 한방안이비인후클리닉: 비염/축농증, 이명/어지럼증, 만성 기침, 혀 질환, 구내염
- 청안클리닉: 여드름, 한방주름 치료, 한방성형, 피부미용

### Specialties

- Allergy / Cosmetic Dermatology Clinic: atopic dermatitis, seborrheic dermatitis, alopecia, and allergic contact dermatitis
- Korean Medicine Ophthalmology and Otolaryngology Clinic: rhinitis / sinusitis, tinnitus / dizziness, chronic cough, tongue disease, and stomatitis
- Korean Medical Skin Care Clinic: acne, korean medical anti-wrinkle care, korean aesthetic plastic surgery, and korean aesthetic skin care

Our center offers healthcare services addressing whole body dysfunction related to all of the diseases that occur in the eyes, ears, nose, throat, and skin.

웰니스(Wellness)는 몸과 마음의 조화를 통해 건강한 삶을 추구한다는 의미입니다. 한방비만체형클리닉, 마음건강클리닉, 한방재활클리닉로 구성되어 있는 웰니스센터는 여러 가지 질병의 원인이 되는 비만과 스트레스, 체형 이상으로 인한 통증과 같은 문제를 미리 치료합니다. 또한 질병 치료 후 남아있는 후유증의 회복을 돕는 것을 목표로 합니다.

**Happiness of body and mind can be found in our hospital Wellness Center**

Wellness means living a healthy lifestyle through a balance of mind and body. The Wellness Center consists of the Korean Medicine Obesity Clinic, Korean Medicine Rehabilitation Clinic, and the Clinic for the healthy mind. We focus on preventative treatments as well as disease treatment for patients with obesity, chronic pains, and stress. In addition, we aim to help patients with suffering from aftereffects of other diseases.



**전문 진료 분야**

비만, 체형교정(거북목, 측만증, 휜다리), 만성통증(추나요법), 만성스트레스, 중풍후유증, 식이장애, 중독(인터넷, 게임, 도박, 술, 담배), 기억력, 집중력 장애

**Specialties**

Obesity, modification of body shape (turtle-neck syndrome, scoliosis, bowleg), chronic pain(Chuna manual therapy), chronic stress, aftereffects following stroke, eating disorders, addictions (internet, gaming, gambling, alcohol, tobacco), defective memory, and attention problems

병원에서 찾는  
몸과 마음의 행복  
웰니스센터 (비만체형/재활/  
마음건강클리닉)

**Happiness of body and mind  
can be found in our hospital  
Wellness Center(Obesity/  
Rehabilitation/ Health  
Mind Clinic)**

Wellness means  
living a healthy  
lifestyle through a  
balance of mind  
and body.



정확한 체질 진단,  
확실한 체질 치료  
사상체질과  
(체질개선클리닉)

**Sasang Constitutional Clinic  
(Constitution Improvement  
Clinic)**

**전문 진료 분야**

과민체질, 허약체질, 냉증체질, 두근거림, 다한증, 부종, 성인병

**Specialties**

Hypersensitive disease, General weakness or immune-deficient symptom, Hand or Foot coldness, Palpitation, hyperidrosis, edematous symptom, and Lifestyle diseases as arteriosclerosis, hypertension and diabetes

사상의학은 사람을 태양인, 태음인, 소양인, 소음인으로 구분하여 질병을 치료하고 예방하는 맞춤의학입니다. 사상체질과는 사상의학 전문의의 진료를 통해 사상의학에 따른 체질별 맞춤 치료와 관리 및 예방을 시행하고 있습니다.

**Exacting personal constitution diagnosis, reliable medical treatment  
for personal constitution! Sasang Constitutional Clinic (Constitution  
Improvement Clinic)**

Sasang Constitutional Medicine is a type of medicine personalized to treat and prevent diseases by dividing people up into four constitutions or body types: Taeumin, Taeyangin, Soeumin, and Soyangin. The clinic offers Sasang Constitutional Medicine specialty therapies that take account of each patient's constitution as determined according to Sasang Constitutional Medicine.

Sasang Constitutional  
Medicine is a type of  
medicine personalized to  
treat and prevent diseases  
by dividing people up into  
four constitutions or body  
types: Taeumin, Taeyangin,  
Soeumin, and Soyangin.



## 조화로운 건강관리 한방건강증진클리닉

Harmonious health care,  
Korean Medicine Health  
Promotion Clinic

건강과 질병 사이에 과도기적 상태를 미병이라 정의합니다. 한방건강증진클리닉은 각종 설문 검사 및 생기능 검사를 활용하여 미병 상태에서부터 건강 상태로 회복할 수 있는 방안을 제시합니다. 피로, 두통, 어지럼증, 귀 울림, 팔다리 이상감각, 주의력 결핍, 기억력 감퇴 등이 미병과 연관 있는 증상입니다. 미병 상태가 의심된다면 한방건강증진클리닉을 방문하여 미병의 진행 정도를 검사받고 건강 회복을 위한 치료 방안을 상담 받으시길 권합니다.

**Harmonious health care, Korean Medicine Health Promotion Clinic**  
Subclinical diseases refer to a transitional state between health and diseases. Korean Medicine Health Promotion Clinic offers services for patients with subclinical diseases to restore their health. Symptoms associated with these diseases are fatigue, headache, dizziness, tinnitus, paresthesia, attention deficit, memory loss, etc. If you suspect that you suffer from subclinical disease, we recommend that you visit our clinic to check the progress of your subclinical disease and to meet our consultants to discuss treatment plans that can restore your health.



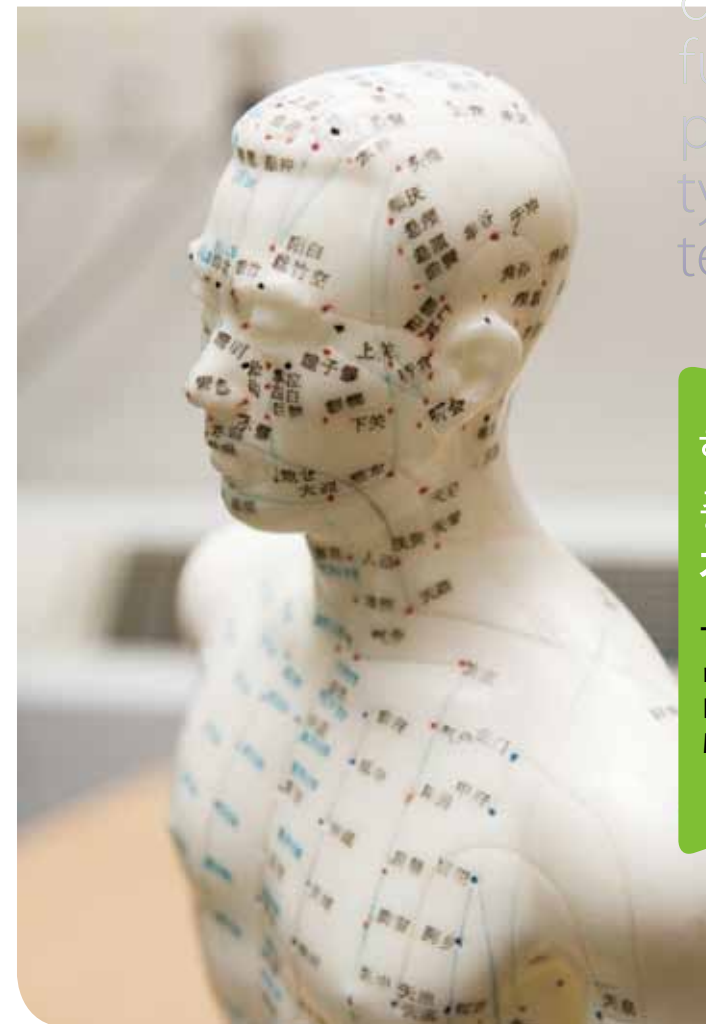
Subclinical  
diseases refer to a  
transitional state  
between health  
and diseases.  
Korean Medicine  
Health Promotion  
Clinic offers  
services for patients  
with subclinical  
diseases to restore  
their health.

진단 · 생기능의학실에서는 각종 생기능 검사 장비를 통해 육체적, 정신적 기능 상태를 정량적으로 평가합니다. 생기능 검사는 기능적 문제 즉 피로, 스트레스, 기혈의 순환 정도, 체액의 정체 정도 및 담음(痰飲)과 같은 노폐물 축적 상태를 검사합니다.

### The center for Korean medicine examination, Biofunctional Diagnosis Medicine

In Biofunctional Diagnosis Medicine, a quantitative assessment of physical, mental, and functional state are performed by different types of biofunctional testing equipment. Biofunctional testing includes testing functional problems, such as the degree of fatigue, stress, and aeremia circulation, the congestion of bodily fluids, and the state of waste accumulation in the body such as Dameum

In Biofunctional  
Diagnosis Medicine, a  
quantitative assessment  
of physical, mental, and  
functional state are  
performed by different  
types of biofunctional  
testing equipment.



## 한방 검사의 중심 진단 · 생기능의학실

The center for Korean  
medicine examination,  
Biofunctional Diagnosis  
Medicine

한방음악치료는 한의학과 음악이 융합되어 오장과 오음, 칠정의 상관관계를 통해 질병을 빠르게 호전시키는 한의학의 새로운 치료 수단입니다. 한방음악치료 센터에서는 여러 가지 악기와 오행음악을 이용한 17가지 한방음악치료 요법을 통해 중풍, 암, 아토피, 산후풍, 소화기 질환, 편마비, 만성피로 등의 빠른 호전을 돕고 있습니다.

**A new Korean Medicine treatment, Korean Medicine Music Therapy Center**  
Korean Medicine Music Therapy is a new Korean medicine treatment that combines Korean medicine and music to quickly cure diseases through the five viscera, the pentatonic scale and correlations between the seven emotions. 17 kinds of Korean medicine music therapy using various instruments and five element music are performed in the clinic center to help patients with stroke, cancer, atopic dermatitis, postpartum diseases, digestive diseases, hemiplegia, chronic fatigue to rapidly heal.

Our center combines Korean medicine and music to quickly cure diseases through the five viscera, the pentatonic scale and correlations between the seven emotions.



한의학의 새로운 치료 한방음악치료센터

A new Korean Medicine treatment, the Korean Medicine Music Therapy Center

동서협진센터  
INTEGRATIVE  
MEDICINE CENTERS

급성기 중풍 환자의 One-Stop 치료시스템 구현  
중풍뇌질환센터

Implementation of a one-stop treatment system for acute stroke patients, Stroke & Neurological Disorders Center



중풍뇌질환센터는 한·양방 통합 진료 서비스로 중풍(뇌졸중), 퇴행성 뇌신경 질환, 말초신경 질환 등 뇌신경 및 혈관계 질환과 관련되는 모든 질환을 전문적으로 치료, 예방하는 센터입니다. 한방내과는 신경과, 신경외과, 재활의학과와의 협진을 통해 국내외 한·양방 협진 시스템의 표준 모델이 되고 있습니다.

**Implementation of a one-stop treatment system for acute stroke patients, Stroke & Neurological Disorders Center**  
The Stroke & Neurological Disorders Center offers integrated care services utilizing Korean and Western medicine. We focus on preventing and treating diseases related to brain and nervous system, such as stroke, neurodegenerative diseases and peripheral neuropathy. Department of Korean Internal Medicine has become a domestic and international role model of integrative care system working together with Department of Neurology, Neurosurgery, and Rehabilitation Medicine.



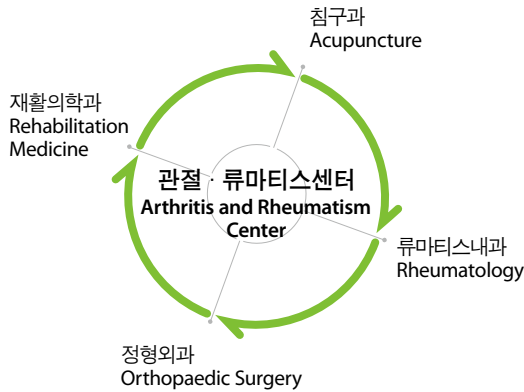
가까이 할수록 힘이 되는  
관절 질환의 동반자  
관절·류마티스센터

Your closer, beneficial Companion for Joint diseases,  
Arthritis and Rheumatism Center



관절염과 류마티스 질환 전문 의료진으로 구성된 관절·류마티스센터는 관절염의 한약 치료, 재활 치료, 수술적 치료를 한자리에서 받을 수 있습니다. 다양한 관절·류마티스 질환의 정확한 진단 및 예후 판단에 기반을 둔 특성화된 한·양방 협진 치료를 통해 관절 질환에 대한 조기 치료와 부작용 최소화를 위한 진료 서비스를 제공합니다.

**Your closer, beneficial Companion for Joint diseases, The Arthritis and Rheumatism Center**  
Health care professionals in the center specializing in arthritis and rheumatic diseases offer one-stop services for patients including specialized Korean medical therapies for arthritis, rehabilitation therapy, and surgical treatment. The health care services are provided through the combined expertise of professionals in both Korean and western treatments focusing on accurate diagnosis and judgment of prognosis. We provide early treatment while minimizing the side effects of joint diseases.



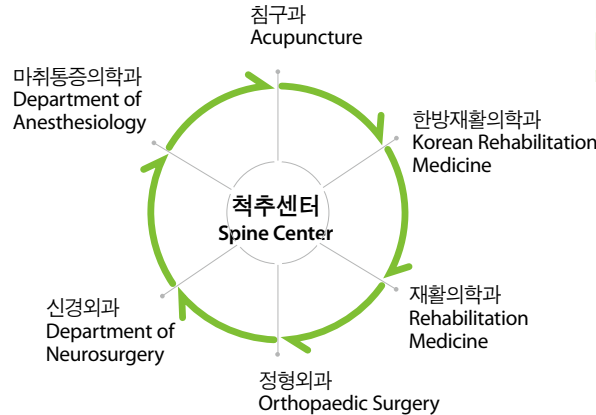
전문화된 맞춤형  
척추 질환 진료 시스템  
척추센터

Specialized and personalized spine care system,  
Spine Center



척추센터는 국내 최초로 척추만을 전문으로 한, 척추에 관한 모든 것을 치료하는 곳입니다. 특히 한방, 외과, 통증 및 재활 부문의 외래가 동시에 진행되는 한·양방 협진 시스템을 통한 상호 보완적 의료 서비스로 치료 효과를 극대화합니다. 또한 척추 교실을 통해 환자에게 운동 방법과 자세를 교육하여 최고의 치료 결과를 이끌어내고 있습니다.

**Specialized and personalized spine care system, Spine Center**  
Our Spine Center is the first clinic in Korea focusing only on the spine, where patients can receive collaborative treatment by east and west medicine for all spinal diseases. In particular, Korean medicine, surgery, and pain and rehabilitation medicine are practiced in parallel to maximize therapeutic effects with the complementary medical services through the collaboration of professionals of both Korean and western treatments. Also, by taking classes in spinal health, patients can be educated in how to exercise with correct posture so that the best treatment results can be achieved.



동서의학의  
조화로운 건강관리  
동서건강증진센터

Harmonious Health Care through East-West  
Medicine, East-West Health Promotion Center



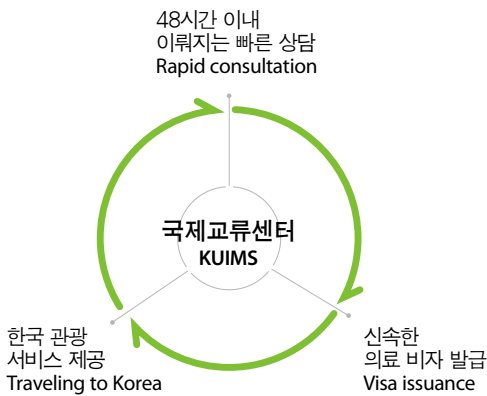
동서건강증진센터는 한·양방 협진을 통한 고급화된 건강검진을 제공합니다. 국내 최고 수준의 전문의와 건강검진 전담 인력, 최첨단 의료 장비를 통해 최상의 의료 서비스를 제공하고 있습니다. 특히 기존의 양의학적 건강검진 외에 사상체질 분석, 맥진, 섭생법 등 한방 검사를 가미한 한·양방 협진으로 환자의 건강관리와 질병 치료에 뛰어난 효과를 보이고 있습니다.

**Harmonious Health Care through East-West Medicine, East-West Health Promotion Center**  
East-West Health Promotion Center offers advanced health screening services through a collaboration of professionals of both Korean and western treatments. The center provides top-notch medical services with the help of the nation's best professionals, preventive health screening work force, and high tech medical equipment. In particular, collaborative therapies supervised by professionals of both Korean and western treatments, including Korean medicine testing, such as analysis of Sasang constitutional types, pulse type, and hygienic rules in addition to the existing medical health screening used in western medicine show excellent effects in the treatment of disease and in patient health maintenance.



외국인 환자 진료에  
필요한 모든 것  
국제교류센터 KUIMS

KUIMS is an accredited, multi-specialty, university  
hospital located in Seoul, Korea.



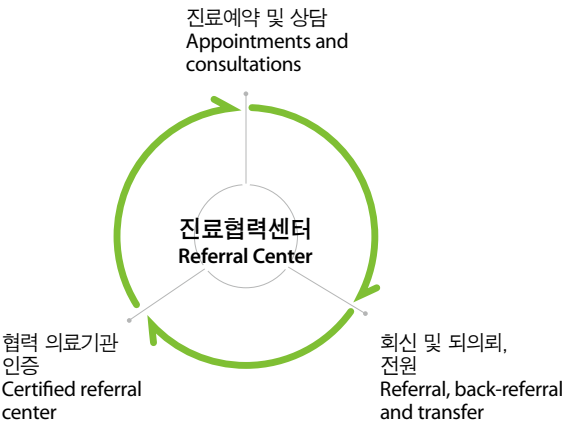
강동경희대학교병원 국제진료센터는 외국인 환자의 진료에 필요한 모든 과정을 책임지고 관리합니다. 영어, 러시아어, 일본어, 몽골어, 베트남어 및 중국어가 가능한 전문 의료코디네이터를 통해 외국인 환자의 진료 편의는 물론 한국에 머물러 있는 동안 불편함 없이 지낼 수 있도록 전반적인 도움을 드립니다.

**KUIMS is an accredited, multi-specialty, university hospital located in Seoul, Korea.**  
KUIMS offers state-of-the-art diagnostic, therapeutic and intensive care facilities in a one-stop medical center. KUIMS serves over a 500,000 patients annually. English is widely spoken. The hospital has an international healthcare center that provides access to our medical system through a team of qualified nurses, and trained interpreters who serve the special needs of international patients. (Languages include: English, Russian, Japanese, Mongolian, Vietnamese and Chinese)



보다 빠른 의료  
전달체계를 실현하는  
진료협력센터

Referral Center implementing a rapid health care delivery system



강동경희대학교병원 진료협력센터는 한방, 양방, 치과 진료에 있어 적극적인 의료 전달체계를 구축함으로써 지역사회 병·의원과 상호 공동발전의 계기를 마련합니다. 또한 강동경희대학교병원을 찾으시는 지역사회 병·의원 선생님과 환자분들에게 신속하고 차별화된 의료서비스를 제공하여 불편함을 최소화하기 위해 최선을 다합니다.

**Referral center implementing a rapid health care delivery system**  
The referral center of Kyung Hee university hospital at Gangdong promotes mutual co-development with community hospitals and doctor's offices by actively building a health care delivery system in Korean medicine, western medicine and dental care. Moreover, our hospital makes every effort to minimize any inconvenience that might occur when physicians of the hospitals and practices and patients visit our hospitals by providing differentiated and rapid medical services.

한방 진료의 전문화,  
세계화를 이끄는 한의학의 자부심  
강동경희대학교한방병원

The pride of Korean medicine  
Leading a specialization and globalization  
Kyung Hee University Korean Medicine Hospital  
at Gangdong





## 강동경희대학교한방병원

KYUNG HEE UNIVERSITY KOREAN MEDICINE HOSPITAL AT GANGDONG

tel. 02)440-7141~2 [www.khnmc.or.kr](http://www.khnmc.or.kr)  
134-727 서울특별시 강동구 동남로 892  
892 Dongnam-ro Gangdong-gu, 134-727, Seoul Korea  
tel. 82-2-440-7141~2

대표전화 1577-5800  
예약 02)440-7000  
국제진료센터 [kuims1@gmail.com](mailto:kuims1@gmail.com)  
진료협력센터 02)440-7771~5

tel. 82-2-1577-5800  
Hospital reservation 82-2-440-7000  
[Kuims.kuims1@gmail.com](mailto:Kuims.kuims1@gmail.com)  
Referral center 82-2-440-7771~5